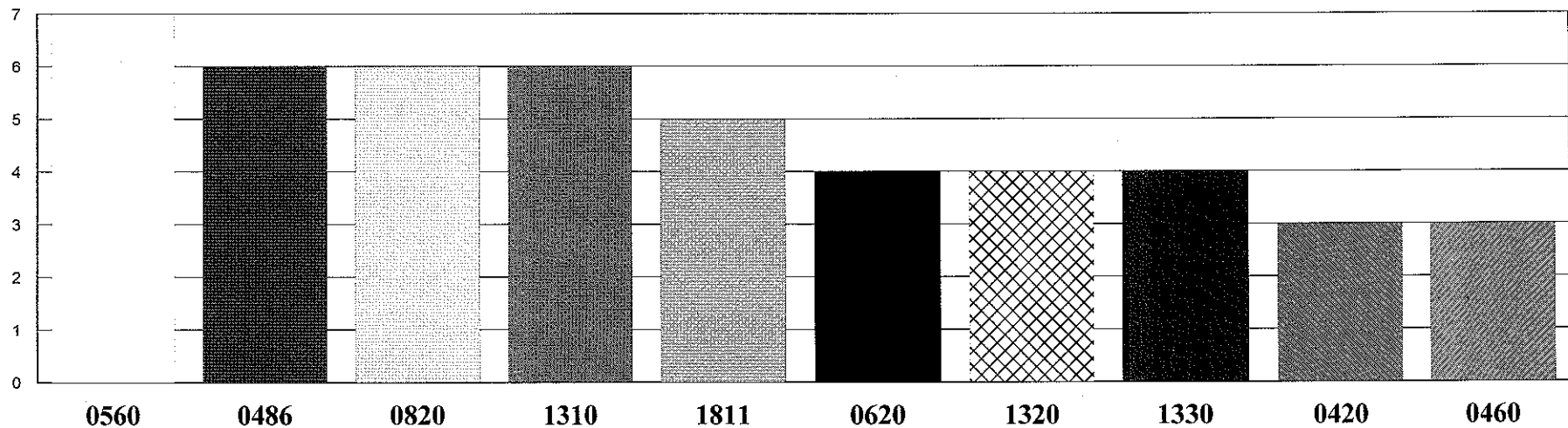


# Top 10 Crimes for Beat 2431

Evaluation Period: 01 March 2008 to 31 March 2008



<b>0560</b>	ASSAULT	SIMPLE	<b>7</b>
<b>0486</b>	BATTERY	DOMESTIC BATTERY SIMPLE	<b>6</b>
<b>0820</b>	THEFT	\$300 AND UNDER	<b>6</b>
<b>1310</b>	CRIMINAL DAMAGE	TO PROPERTY	<b>6</b>
<b>1811</b>	NARCOTICS	POSS: CANNABIS 30GMS OR LESS	<b>5</b>
<b>0620</b>	BURGLARY	UNLAWFUL ENTRY	<b>4</b>
<b>1320</b>	CRIMINAL DAMAGE	TO VEHICLE	<b>4</b>
<b>1330</b>	CRIMINAL TRESPASS	TO LAND	<b>4</b>
<b>0420</b>	BATTERY	AGGRAVATED:KNIFE/CUTTING INSTR	<b>3</b>
<b>0460</b>	BATTERY	SIMPLE	<b>3</b>

Data Date: 03 April 2008